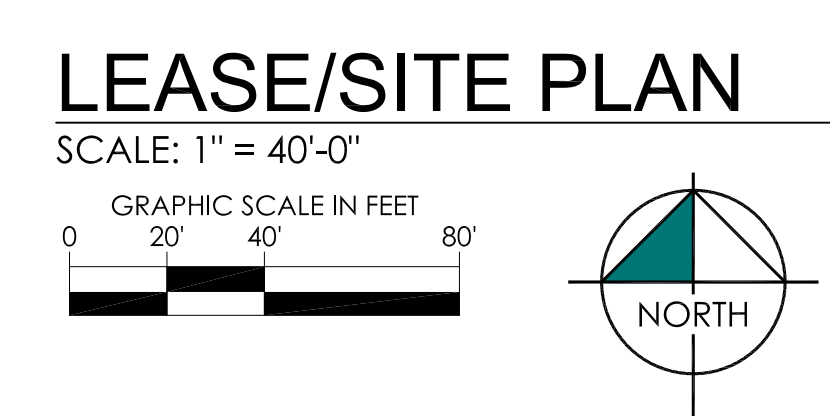


LEASING DATA		
SPACE:	AREA:	TENANT:
1	1,174 S.F.	LIFE SPRING HEALTH FOOD
2	2,254 S.F.	MY GYM
3	1,200 S.F.	AVAILABLE
4	23,045 S.F.	CHICAGO ATHLETIC CLUB
6	1,738 S.F.	VERTICAL BLINDS FACTORY
7	29,957 S.F.	BARNES & NOBLE
9	4,734 S.F.	AVAILABLE
10	763 S.F.	AVAILABLE
11	10,660 S.F.	CHASE BANK
17	34,375 S.F.	REGAL CINEMA
18	15,125 S.F.	REGAL CINEMA EXP.
4A	9,893 S.F.	CHICAGO ATHLETIC CLUB
2001	NA	TOTAL OUTDOORS
2002	NA	OUTFRONT MEDIA
TOTALS:		
RETAIL	134,918 S.F.	
TOTAL	134,918 S.F.	
TOTAL PARKING	660 SPACES	
PARKING RATIO	4.89/1000	
TOTAL PROPERTY ACREAGE	±4.260 A.C.	

SPACE:	AREA:	TENANT:
1	1,174 S.F.	LIFE SPRING HEALTH FOOD
2	2,254 S.F.	MY GYM
3	1,200 S.F.	AVAILABLE
4	23,045 S.F.	CHICAGO ATHLETIC CLUB
6	1,738 S.F.	VERTICAL BLINDS FACTORY
7	29,957 S.F.	BARNES & NOBLE
9	4,734 S.F.	AVAILABLE
10	763 S.F.	AVAILABLE
11	10,660 S.F.	CHASE BANK
17	34,375 S.F.	REGAL CINEMA
18	15,125 S.F.	REGAL CINEMA EXP.
4A	9,893 S.F.	CHICAGO ATHLETIC CLUB
2001	NA	TOTAL OUTDOORS
2002	NA	OUTFRONT MEDIA



DISCLAIMER
THE DRAWING IS PRELIMINARY AND FOR INFORMATION PURPOSES ONLY AND SHOULD NOT BE CONSIDERED A CONTRACT. DIMENSIONS, QUANTITIES, MATERIALS, AND FINISHES ARE SUBJECT TO CHANGE WITHOUT NOTICE. THE DRAWING IS NOT TO BE USED FOR CONSTRUCTION OR FOR ANY OTHER PURPOSE. THE DRAWING IS THE PROPERTY OF RAMCO GERSHENSON PROPERTIES TRUST AND NO REPRESENTATION OR WARRANTY IS MADE BY THE DRAWING.

Subject
LEASE/SITE PLAN

Project
Webster Place
Chicago, Illinois

RAMCO GERSHENSON PROPERTIES TRUST
1100 N. WESTERN AVENUE, SUITE 900
CHICAGO, ILLINOIS 60610
PHONE: 312.551.1000 FAX: 312.551.9995

Center Number
862-01
Sheet Number
LS - 02 AVAILABILITY

Do not scale drawings Use figured dimensions